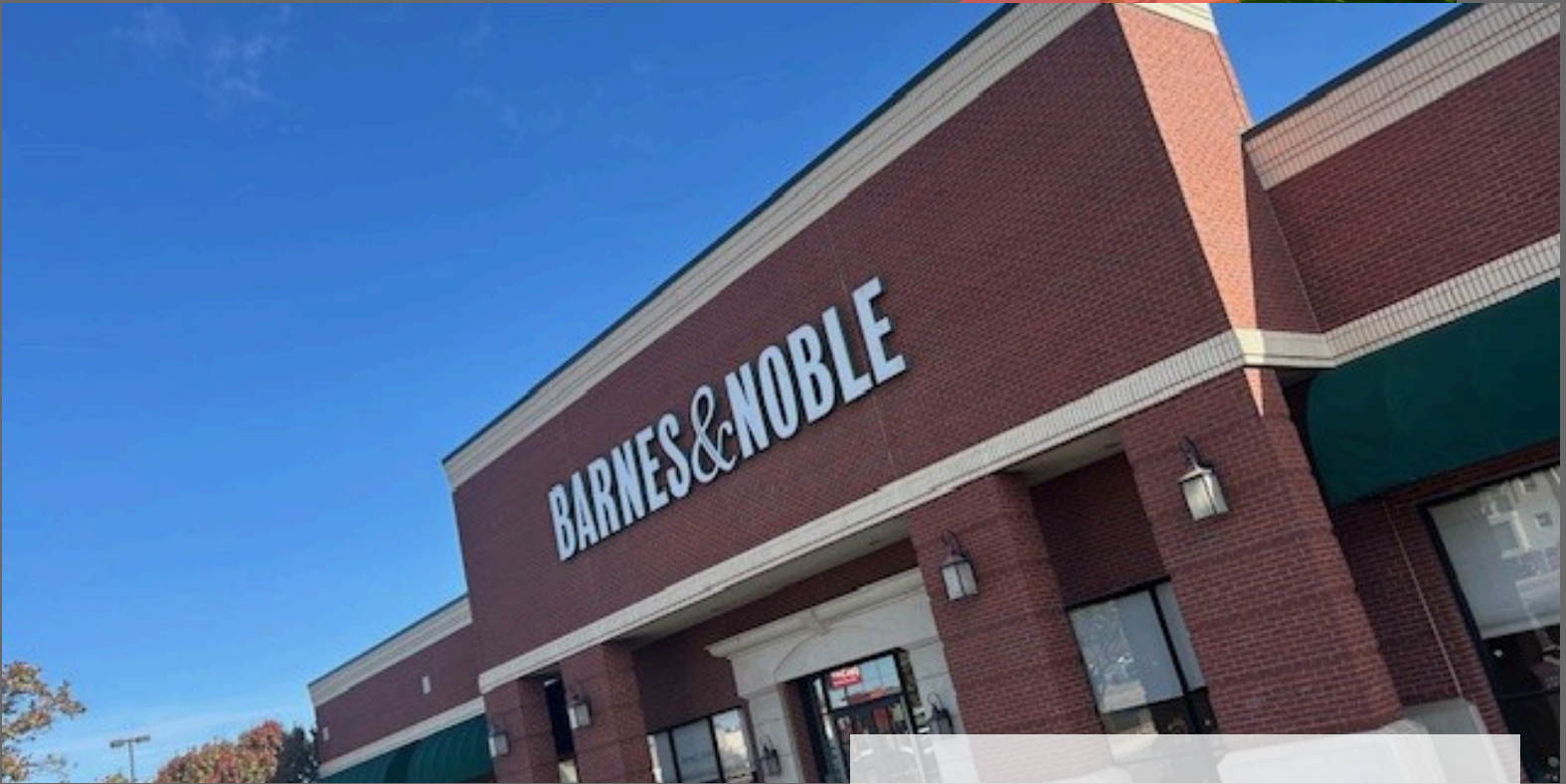


B.D. EDDIE ENTERPRISES

REAL ESTATE DEVELOPMENT AND MANAGEMENT



RETAIL SPACE FOR LEASE

Prime commercial opportunity in a high traffic location with great exposure in one of the most densely populated and commercial areas of the Oklahoma City metro area. NW 63rd and N May Avenue is a highly sought after retail destination anchored by Home Depot, Hobby Lobby, Best Buy, Sprouts, Burlington, and Target. The retail neighborhood is also host to many national QSRs and a myriad of local retailers.

- 30,000 sf retail space in pristine condition
- Highly visible opportunity with over 26,000 vpd
- Plentiful parking
- Large pylon signage available

**6100 N MAY AVE
OKLAHOMA CITY, OK 73116**

405-843-5060

**info@bde-kbi.com
www.bde-kbi.com/6100**



\$116,728 AVG HH INCOME*



24,826 DAYTIME POP*

**1-mile demos*



\$18/SF

10 YEAR TERM

The depictions, plans, and pricing information contained herein are subject to change without notice, and no representation or warranty, express or implied, is made with respect to the matters depicted or stated herein.

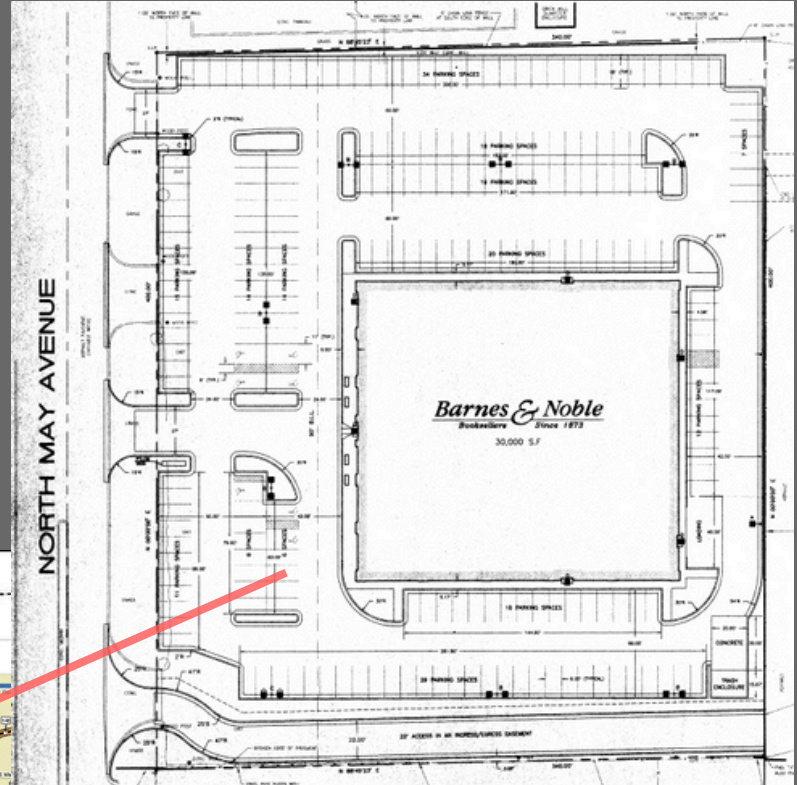


B.D. EDDIE ENTERPRISES

REAL ESTATE DEVELOPMENT AND MANAGEMENT

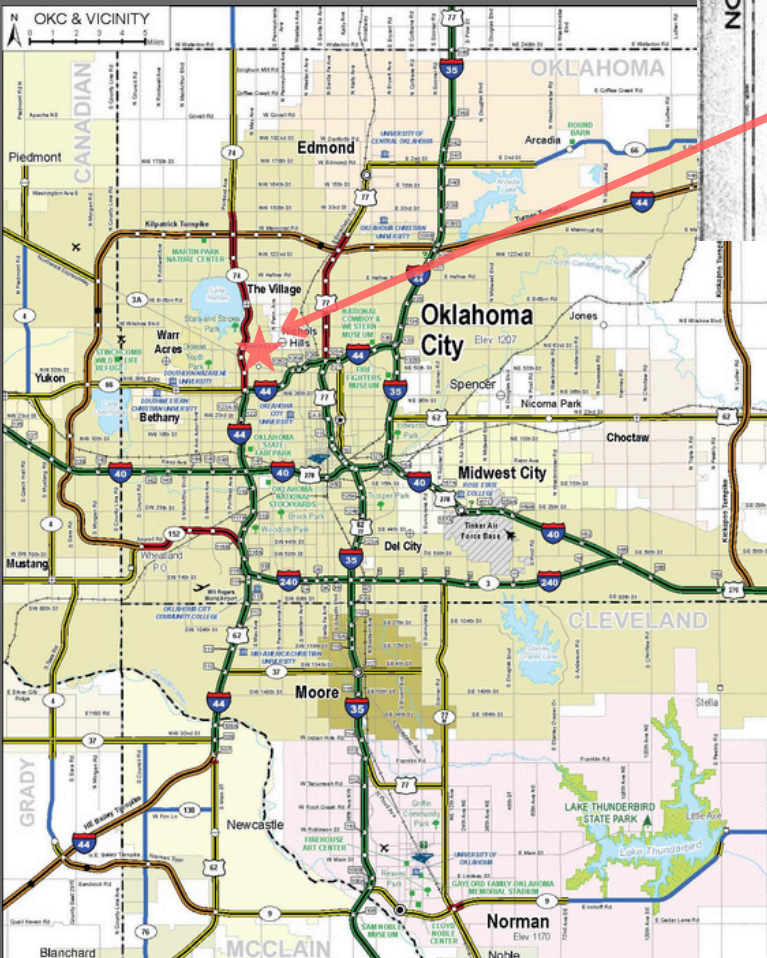
DEMOGRAPHICS	1-MILE	3-MILE	5-MILE
POPULATION	10,538	88,412	235,146
DAYTIME POPULATION	24,826	114,689	293,695
AVERAGE HH INCOME	\$116,728	\$105,906	\$92,401

SITE PLAN*



*This site plan is schematic in nature and is provided only for marketing purposes.

OKC METRO MAP



info@bde-kbi.com

405-843-5060

www.bde-kbi.com/6100

The depictions, plans, and pricing information contained herein are subject to change without notice, and no representation or warranty, express or implied, is made with respect to the matters depicted or stated herein.



B.D. EDDIE ENTERPRISES

REAL ESTATE DEVELOPMENT AND MANAGEMENT



info@bde-kbi.com

405-843-5060

www.bde-kbi.com/6100

The depictions, plans, and pricing information contained herein are subject to change without notice, and no representation or warranty, express or implied, is made with respect to the matters depicted or stated herein.