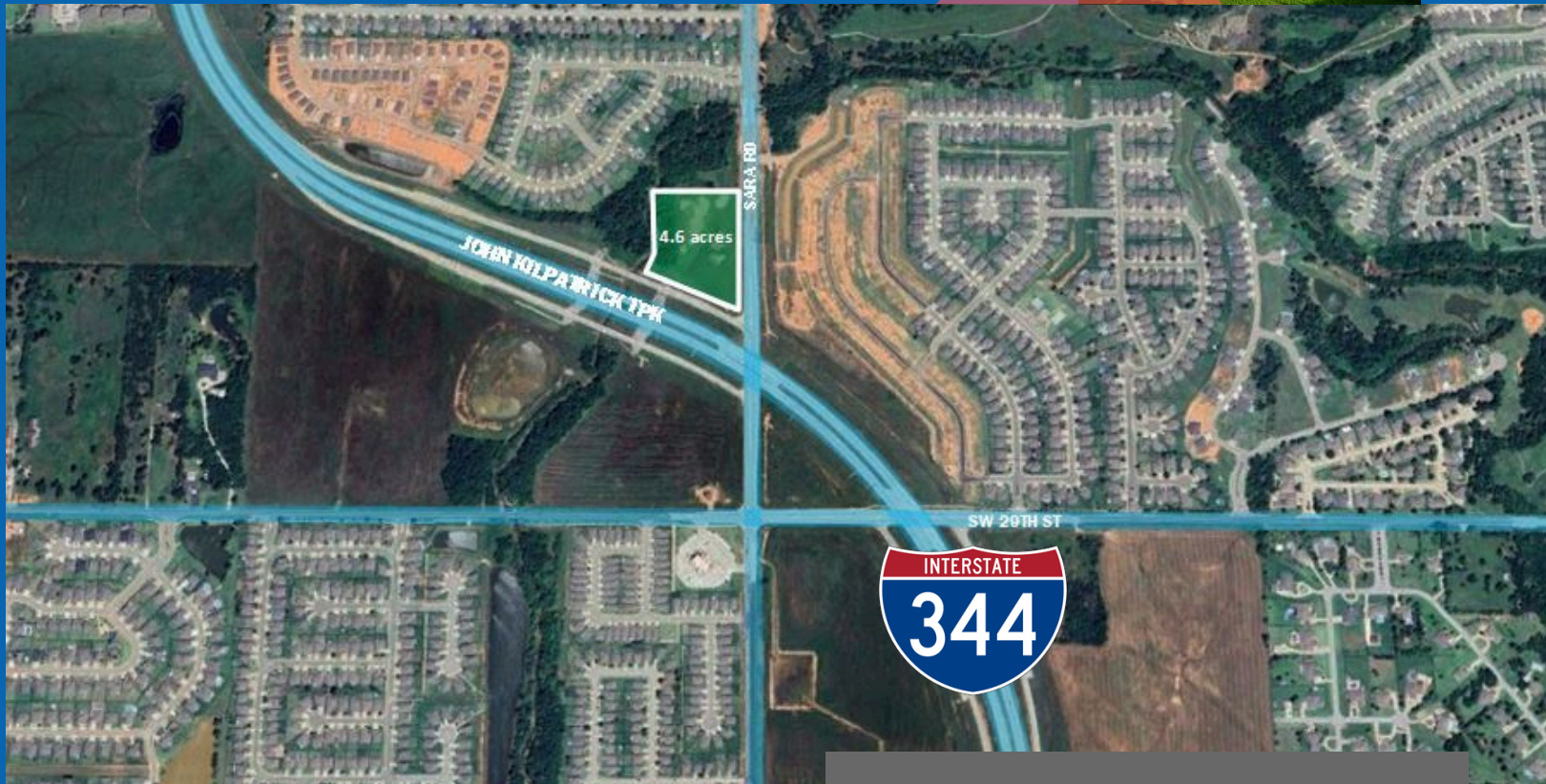


B.D. EDDIE ENTERPRISES

REAL ESTATE DEVELOPMENT AND MANAGEMENT



AVAILABLE FOR DEVELOPMENT COMMERCIAL LAND

NWc SARA RD AND JOHN KILPATRICK TPK
OKC, OK 73099

- COMMERCIAL PAD SITES FOR GROUND LEASE OR BUILD TO SUIT COMMERCIAL
- RAPIDLY EXPANDING MUSTANG SCHOOL DISTRICT
- SARA RD IN PROCESS OF BEING WIDENED TO 4 LANES
- EMERGING COMMERCIAL AREA OF SW OKC METRO AREA
- EXCELLENT TURNPIKE VISIBILITY & ACCESS
- **4.6 ACRES (MOL)**
- C-3 ZONING

405-826-7658 

clay@bde-kbi.com
www.bde-kbi.com/sara



\$108,463 AVG HH INCOME*



42,479 DAYTIME POP*



2.54% ANNUAL GROWTH RATE*

***3-mile demos**

The depictions, plans, and pricing information contained herein are subject to change without notice, and no representation or warranty, express or implied, is made with respect to the matters depicted or stated herein.

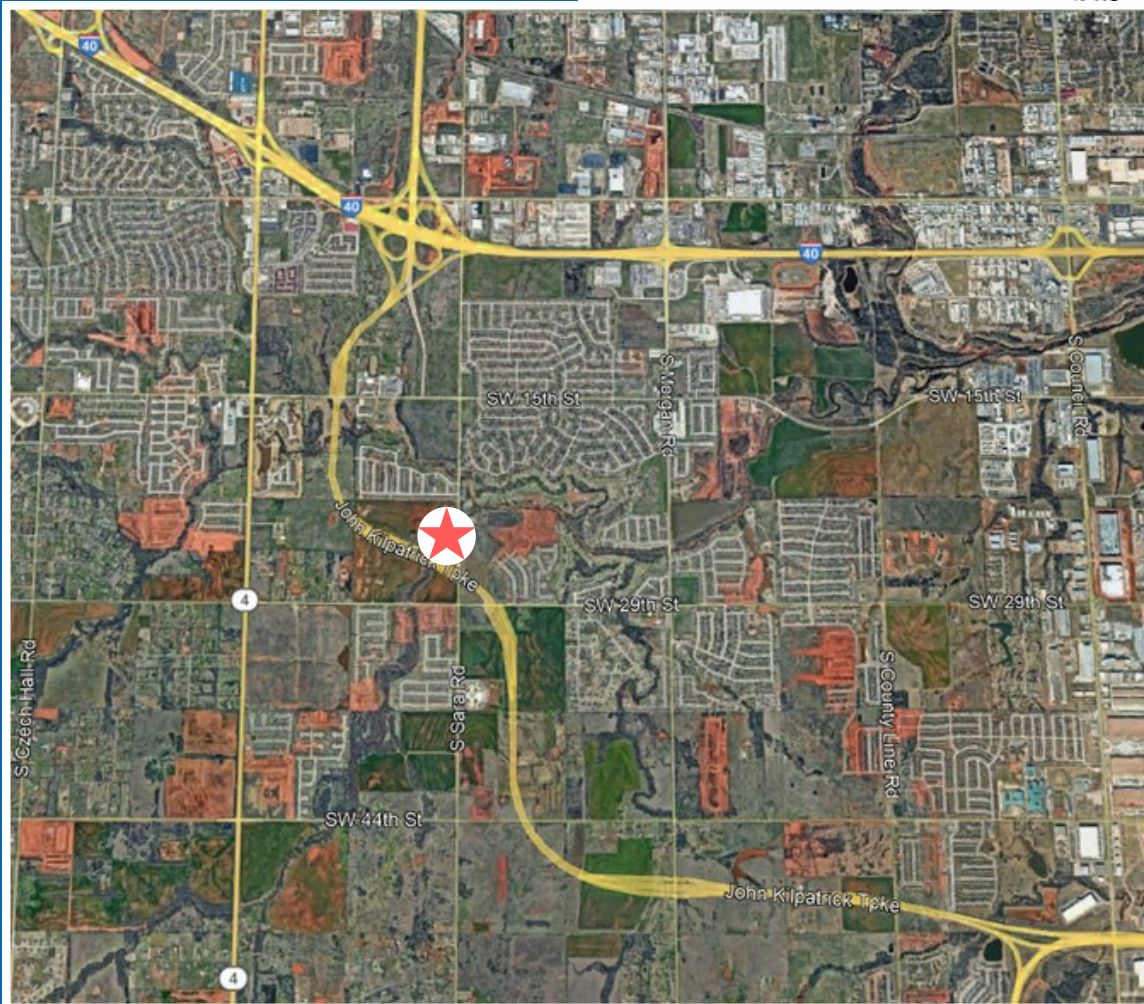
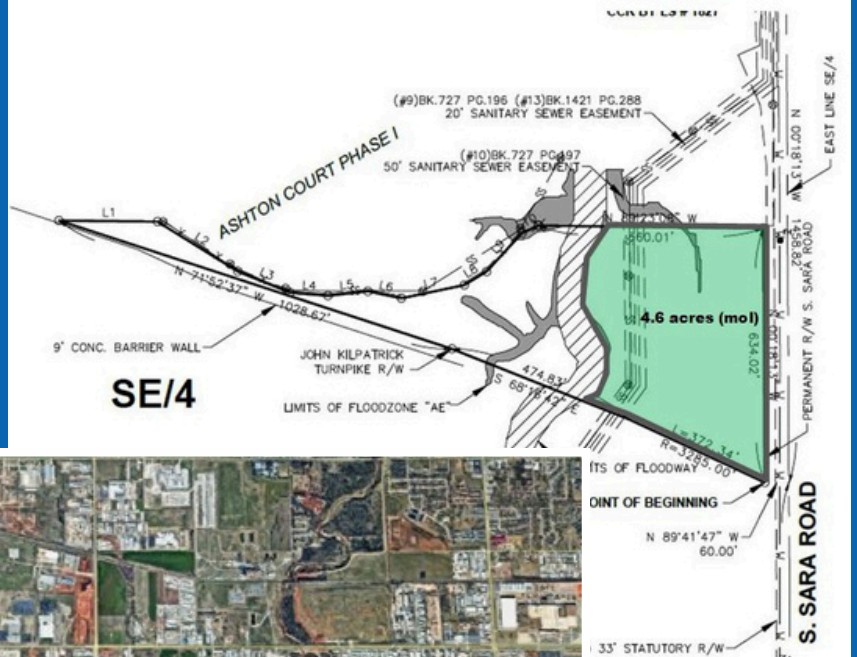


B.D. EDDIE ENTERPRISES

REAL ESTATE DEVELOPMENT AND MANAGEMENT

DEMOGRAPHICS	1-MILE	3-MILE	5-MILE
POPULATION	9,190	50,931	116,927
DAYTIME POPULATION	4,975	42,479	107,041
AVERAGE HH INCOME	\$101,605	\$108,463	\$101,478

SURVEY



clayf@bde-kbi.com

405-843-5060

www.bde-kbi.com/sara

The depictions, plans, and pricing information contained herein are subject to change without notice, and no representation or warranty, express or implied, is made with respect to the matters depicted or stated herein.