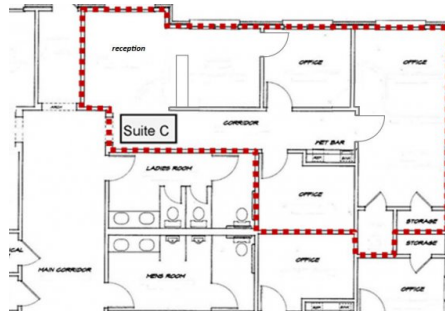


OFFICE SPACE FOR LEASE : 1,148 SF AVAILABLE

Ready for Occupancy February 1st, 2017

2537 S. Kelly Avenue Edmond, OK 73013



FEATURES:

- Move-In Ready!
- Wet bar.
- Plentiful storage.
- Exposure to Kelly Ave.

DESCRIPTION:

This space will be available for occupancy on February 1st, 2017. The single-story building has a shared entry corridor and plentiful restroom facilities. Suite C has a welcoming reception area with a built-in reception check counter with a granite top. There is one large executive office, a private therapy/office and a store/copy room. All windows have faux wood blinds. There is a wetbar with attractive cabinets, a granite counter top, and a space for a small under counter refrigerator.

SITE INFO:

SUITE ADDRESS: 2537 S. Kelly, Edmond 73013

RATE: \$20/sf

AVAILABLE SF: 1,148 rentable square feet

LEASE TYPE: Full Service

LEASE TERM: 3 years

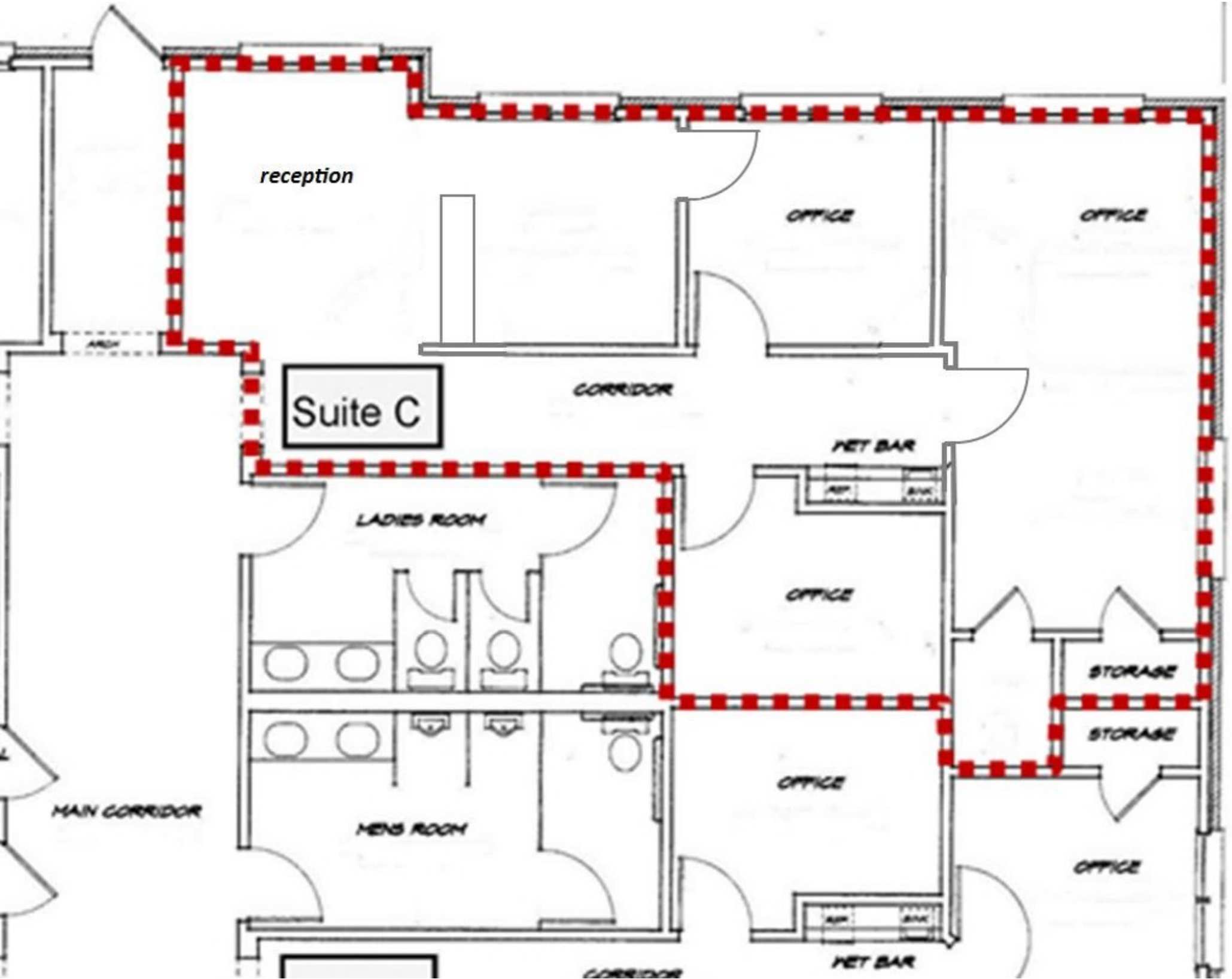
DEMOGRAPHICS:

	1 - MILE	3 - MILE	5 - MILE
POPULATION	6,492	75,140	172,866
DAYTIME POPULATION	9,499	39,586	75,335
HOUSEHOLDS	2,766	29,993	69,657
MED HH INCOME	\$52,599	\$62,101	\$61,062
PER CAPITA INCOME	\$28,450	\$33,842	\$35,739

TRAFFIC:

	CARS PER DAY
Kelly & Centennial - 2-way 2015	30,300





The depictions, descriptions and pricing information contained herein are subject to change without notice, and no representation or warranty, express or implied, is made with respect to the matters depicted or stated herein.